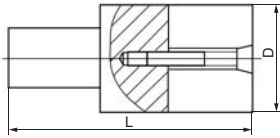


## HAND-E EXPANDING ARBORS SET

ISO9001



### Features:

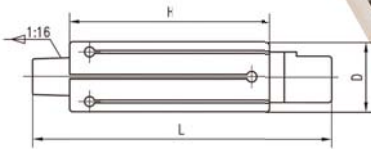
- Chuck arbors in machine to be used.
- Tighten expanding screw so that the arbor expands 0.005".
- Machine arbor to the length and size required.
- Loosen expanding screw.
- Position part on arbor and tighten expanding screw.
- Size: 1/4", 3/8", 1/2", 5/8", 3/4", 7/8", 1", and 1-1/4" arbors with 4 alloy wrenches in a handy wooden stand.

Item	D	L	Expanding Range	Size of Wrench	Price
6931-0900	1/4"	3	0.005"	5/64"	\$99.00/SET
	3/8"			3/32"	
	1/2"			9/64"	
	5/8"			3/16"	
	3/4"				
	7/8"				
	1"				
	1-1/4"				

## 8PC PRECISION EXPANDING MANDREL SET

### Features:

- Made of high grade tool steel.
- Precision ground and heat treated for maximum concentricity and holding power.
- Center holes are ground and lapped.
- The automatic expansion feature can be utilized on any bores (standard or non-standard) within the range of the mandrel.
- Sizes up to 1" capacity are furnished with 1 sleeve; Larger sizes are furnished with 2 sleeves (1 large and 1 small).
- Arbors are tapered, sleeves are flexible and the size is obtained by moving sleeve along the arbor.
- A range from 1/2" thru 2" by 1/1000" can be covered by a total of 8 mandrels.
- Packed in a fitted wooden box.



ISO9001

NEW

Item	Size Range	No. of Mandrels	Price
6978-0918	1/2" ~ 2"	8	\$580.00/SET

### 6978-0918, 8pcs/set: 1/2" thru 2"

Size Range (D)	Length of Arbor (L)	Length of Sleeve (H)	Sleeves Furnished
1/2" ~ 9-16"	5"	2-1/2"	1
9-16" ~ 21/32"	6"	2-3/4"	1
21/32" ~ 3/4"	7"	2-3/4"	1
3/4" ~ 7/8"	7"	3-1/4"	1
7/8" ~ 1"	7"	3-1/4"	1
1" ~ 1-1/4"	9"	4"	2
1-1/4" ~ 1-1/2"	9"	4"	2
1-1/2" ~ 2"	11-1/2"	5"	2

## 58PC DELUXE STEEL CLAMPING KIT

ISO9001

### Features:

- For clamping workpieces to machine table
- Material: S45C, black oxide finished
- Heat treatment: hardness of each part is HRC32±5
- Quality kit for a Bridgeport
- Packed in strong moulded plastic case

### Set includes:

- 24 studs: 4 pieces of each length 3", 4", 5", 6", 7" & 8"
- 4 coupling nuts
- 6 flange nuts
- 6 T-slot nuts
- 6 serrated end clamps
- 12 step blocks



NEW



4230-2627

Item	Table Slot	Stud Size	Price
4230-2624	7/16"	3/8"-16	\$138/.00/SET
4230-2625	1/2"	3/8"-16	\$138/.00/SET
4230-2627	11/16"	1/2"-13	\$156/.00/SET
4230-2628	3/4"	5/8"-11	\$234/.00/SET

## 58PC STEEL CLAMPING KIT

### Features:

- Quality kit for a Bridgeport

### Set includes:

- 24 studs: 4 pieces of each length 3", 4", 5", 6", 7" & 8"
- 4 coupling nuts
- 6 flange nuts
- 6 T-slot nuts
- 6 serrated end clamps
- 12 step blocks
- Wall Holder



Item	Table Slot	Stud Size	Block width	Price
4230-2626	5/8"	1/2"-13	1"	\$118/.00/SET

## 1/2"-13 T-SLOT NUT

### Features:

- Heat thread steel black oxide finished.
- An imperfect thread is left at the base of the T-nut to prevent the stud passing through the T-nut and damaging the table slot.



0532-4818

Item	T-Slots Nut	Table Slot T	Slot Height	Overall Height	Price
0532-4818	1/2"-13	5/8"	11/32"	5/8"	\$3.00/PC
0532-4819	1/2"-13	11/16"	7/16"	3/4"	\$3.50/PC