

## FINE POLE PERMANENT MAGNETIC CHUCK

### Features:

- Use rare earth ceramic magnets inside for superior holding power
- Sealed against dirt and liquid
- 1-5/8" very low profile to allow max. work height clearance
- Flat and parallel within 0.0002"
- Precision ground rails are included
- High holding power: max 140lbs/sq.in.
- Steel pole spacing: 1/16", brass pole spacing: 1/32"

Item	Size	Price
2720-2000	4" x 4"	\$319.00/PC
2720-1000	6" x 6"	\$403.00/PC
2720-5000	6" x 12"	\$594.00/PC
2720-0000	6" x 18"	\$912.00/PC



2720-1000

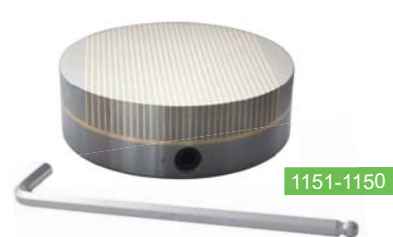


2720-0000

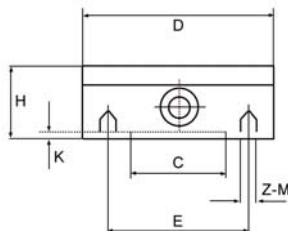
## CIRCL PERMANENT MAGNETIC CHUCK

### Features:

- The round fine-pitch permanent magnet chuck is suitable for grinders and lathes, best for longer and thicker workpieces.
- The round micro pitch permanent magnetic chuck is suitable for grinding applications, best for smaller and thinner workpieces.
- High holding power: max 140lbs/sq.in.
- Steel pole spacing: 1/16", brass pole spacing: 1/32".



1151-1150



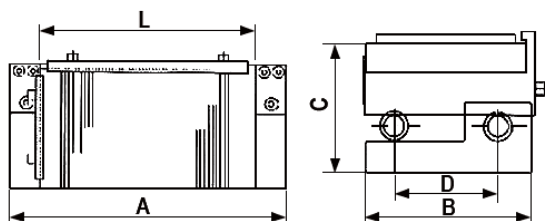
Item	D	H	K	C	E	Z-M	Weight	Price
1151-1150	6.299"	1.929"	0.079"	4.921"	5.512"	4xM8	6.5kg	\$616.00/PC
1151-2200	7.874"	2.008"	0.079"	6.299"	7.087"	4xM8	10kg	\$980.00/PC

## 6" X 6" MAGNETIC SINE PLATE

Center Distance of Rolls 4", within 0.0002"

### Features:

- Processed through a special procedure, enabling higher precision-adjustment.
- Flat type for a wide range of uses. Ideal for high accuracy grinding operations.
- Sealed against dirt and liquids.
- A removable handle and two precision ground rails are included for the magnetic chuck.
- Steel pole spacing: 1/16", brass pole spacing: 1/32".
- Center distance of rolls 4", within 0.0002".
- The ON/OFF switch magnetic surface accuracy.



Item	Size (LxB)	Rolls Center (D)	C	A	Angle	Price
2520-1000	6" x 6"	4"	3.385"	7.874"	0-60°	\$831.00/PC

## SINE PLATE

### Features:

- Two precision ground rails included
- 0-50 degree adjustable
- Hardened to HRC 58-62 and precision ground



2591-0000

Item	Size L x W x H	Center Distance	Price
2591-0000	6" x 6" x 2"	5" (0.0002")	\$285.00/PC
2591-0001	12" x 6" x 2-5/8"	10" (0.0002")	\$616.00/PC

## PRECISION ANGLE PLATE

### Features:

- Solid one-piece steel construction
- Hardened to HRC 58-62
- Ground flat, square and parallel to 0.0002"



2200-0903

Item	Size	Thickness	Number of Hole	Price
2200-0901	4" x 3" x 3"	1"	13 Tapped 1/4"-20	\$120.00/PC
2200-0903	4" x 4" x 4"	1-1/4"	13 Tapped 1/4"-20	\$152.00/PC
2200-0904	6" x 6" x 4"	1-1/4"	26 Tapped 1/4"-20	\$303.00/PC

## COMPOUND ANGLE PLATE

### Features:

- Solid 1 piece steel construction
- Hardened to HRC 58-62
- Square and parallel within 0.0002"
- Includes 1 clamp



Item	Length	Height	Thickness	Tapped Hole	Price
SBK0-0105	6"	4"	1"	(16)1/4"-20	\$394.00/SET

## MAGNETIC CHUCK PARALLEL & UNIVERSAL "V" BLOCK

### Features:

- Cast integrally with aluminum to ensure the blocks will never crack or become loose even when accidentally dropped.
- Steel is selected for aluminum magnetic transfer and low retention of magnetic flux.



**Item #EG06-2001 \$95.00/SET**

- 1" x 2" x 4" micro parallels ground all over and in pairs.

**Item #EG06-2004 \$117.00/SET**

- "V" blocks are universal (hold in any direction on a magnetic chuck).
- Two V's: 1-7/8" x 2-3/8" x 2".
- Large V: 2" round capacity.
- Small V: 1/2" round capacity.

