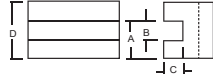


TURNING AND FACING HOLDER #1

Features:

- Takes lathe bits of various sizes.
- Turning and facing tools can be locked together.
- Saves time and labor during changing operations.



Item	Model	Dimension				Tool Bit	Price
0250-0101	AXA	15/16"	1/2"	7/16"	1-1/2"	3/16"-1/2"	\$28.00/PC
0250-0101T	AXA	1-3/32"	5/8"	35/64"	1-1/2"	3/16"-5/8"	\$29.00/PC
0250-0201	BXA	1-1/8"	5/8"	1/2"	1-3/4"	1/4"-5/8"	\$33.00/PC
0250-0201T	BXA	1-3/16"	3/4"	5/8"	1-3/4"	1/4"-3/4"	\$36.00/PC
0250-0301	CXA	1-7/16"	3/4"	5/8"	2-1/8"	1/2"-3/4"	\$46.00/PC
0250-0301T	CXA	1-17/32"	1"	13/16"	2-1/8"	1/2"-1"	\$49.00/PC
0250-0401	CA	1-11/16"	1"	3/4"	2-1/2"	1/2"-1"	\$63.00/PC

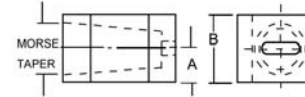
ISO9001



0250-0201T

MORSE TAPER HOLDER #5

ISO9001



Features:

- Drills with carriage by using power feed instead of tailstock. Easily centered.
- For drills of Morse Taper No. 2, 3, and 4. (Not Included)

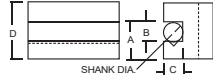


0250-0205

BORING, TURNING AND FACING HOLDER #2

Features:

- V-groove holds round shank boring bars and tools as well as square tool bits.



Item	Model	Dimension				Tool Bit	Shank	Price
0250-0102	AXA	15/16"	1/2"	7/16"	1-1/2"	3/16"-1/2"	7/16"	\$28.00/PC
0250-0102T	AXA	1-3/32"	5/8"	35/64"	1-1/2"	3/16"-5/8"	7/16"	\$30.00/PC
0250-0202	BXA	1-1/8"	5/8"	1/2"	1-3/4"	1/4"-5/8"	1/2"	\$34.00/PC
0250-0202T	BXA	1-3/16"	3/4"	5/8"	1-3/4"	1/4"-3/4"	1/2"	\$38.00/PC
0250-0302	CXA	1-7/16"	3/4"	5/8"	2-1/8"	1/2"-3/4"	3/4"	\$48.00/PC
0250-0402	CA	1-11/16"	1"	3/4"	2-1/2"	1/2"-1"	13/16"	\$66.00/PC

ISO9001



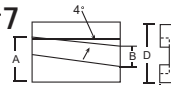
0250-0402

UNIVERSAL PARTING BLADE HOLDER #7

Features:

- For bevels as well as T-cut blades.

ISO9001



Item	Model	Dimension				Blade Height	Price
0250-0107	AXA	13/16"	1/2"	3/16"	1-1/2"	1/2"	\$36.00/PC
0250-0207	BXA	1"	11/16"	3/16"	1-3/4"	11/16"	\$40.00/PC
0250-0307	CXA	1-3/16"	3/4"	3/16"	2"	3/4"	\$65.00/PC
0250-0407	CA	1-7/16"	7/8"	1/4"	2-1/2"	7/8"	\$78.00/PC

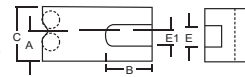


0250-0307

KNURLING, TURNING AND FACING HOLDER #10

Features:

- For turning and facing as well as knurling. Supplied with a set of high-speed, precision-ground, and lapped medium diamond knurls.



Item	Model	Dimension				Tool Bit	Price
0250-0110	AXA	7/8"	2-1/2"	1-9/16"	1/2"	3/8"	\$48.00/PC
0250-0210	BXA	1"	2-5/8"	1-3/4"	5/8"	1/2"	\$55.00/PC
0250-0310	CXA	1-3/16"	3-1/8"	2"	3/4"	5/8"	\$76.00/PC
0250-0410	CA	1-7/16"	3-3/4"	2-1/2"	1"	3/4"	\$88.00/PC

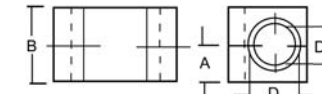
ISO9001



0250-0310

HEAVY-DUTY BORING BAR HOLDER #4 & #41

ISO9001



Features:

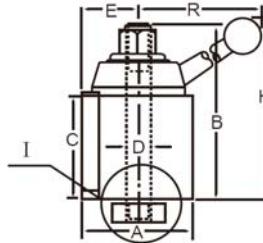
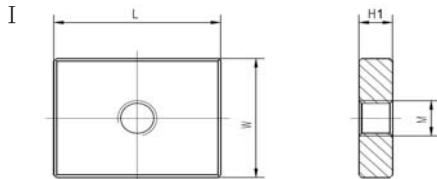
- Equipped with a split bushing to accommodate a boring bar of a smaller diameter.
- It grips with extreme rigidity, cuts smoothly without chatter.



0250-0304

QUICK CHANGE TOOL POST

- Both Wedge and Piston posts are precision engineered to assure repetitive accuracy.
- Advanced design provides built-in quick tool changing versatility with positive rigidity to meet the most exacting tolerances.
- Quickly and easily installed on an engine, bench, or turret lathe for a wide range of operations, from fine-precision work to heavy-duty cutting.
- Piston type posts are economical, while the wedge type posts are clearly ultra-precise. Both accept the toolholders and interchange with Aloris, Dorian, and DTM tooling.



Two different styles-piston or wedge

Piston Style

Item	Model	A	B	C	D	E	H	R	Swing	Code	L	W	H1	M	Price
0250-0100	AXA	2-1/2"	3-7/8"	2-1/4"	9/16"	1-7/16"	4-11/16"	5-3/4"	6-12"	I	1.850"	2.362"	0.472"	M14x1.5	\$128.00/PC
0250-0200	BXA	3"	4-5/8"	2-3/4"	5/8"	1-5/8"	5-9/16"	7-5/16"	10-15"	I	2.756"	2.500"	0.630"	M16x1.5	\$140.00/PC
0250-0300	CXA	3-3/8"	5-1/8"	3"	3/4"	1-7/8"	6-1/8"	7-7/8"	13-18"	I	2.992"	2.992"	0.748"	M20x2	\$178.00/PC
0250-0400	CA	4"	6-1/4"	3-5/8"	7/8"	2-1/8"	7"	9"	14-20"	I	3.937"	2.992"	0.984"	M22x2	\$332.00/PC

Wedge Style

Item	Model	A	B	C	D	E	H	R	Swing	Code	L	W	H1	M	Price
0250-0111	AXA	2-1/2"	3-7/8"	2-1/4"	9/16"	1-3/8"	4-11/16"	5-3/4"	6-12"	I	2.500"	2.244"	0.500"	9/16"-18UNF	\$168.00/PC
0250-0222	BXA	3"	4-5/8"	2-3/4"	5/8"	1-9/16"	5-9/16"	7-5/16"	10-15"	I	2.992"	2.756"	0.630"	5/8"-18UNF	\$199.00/PC
0250-0333	CXA	3-1/2"	5-1/8"	3"	3/4"	1-29/32"	6-1/8"	7-7/8"	13-18"	I	3.504"	2.992"	0.748"	3/4"-16UNF	\$280.00/PC
0250-0444	CA	4"	6-1/4"	3-5/8"	7/8"	2-1/8"	7"	9"	14-20"	I	3.937"	3.622"	0.984"	7/8"-14UNF	\$409.00/PC