

SINE PLATE

Features:

- Two precision ground rails included
- 0-50 degree adjustable
- Hardened to Rc 58-62 and precision ground



2591-0000

Item	Size L x W x H	Center Distance	Price
2591-0000	6" x 6" x 2"	5" (0.0002")	\$259.00/PC
2591-0001	12" x 6" x 2-5/8"	10" (0.0002")	\$560.00/PC

DEMAGNETIZER

Features:

- 110V AC with ON/OFF switch
- Table size: 6-7/16" x 4-3/4"
- Dimension: 7-31/64"(L) x 4-3/4"(W) x 3-35/64"(H)
- Weight: 5.51lbs
- Demagnetize dies, punches, cutters or any tools that have become magnetized



Item # P900-S315 \$115.00/PC

PRECISION ANGLE PLATE

Features:

- Solid one-piece steel construction
- Hardened to Rc 58-62
- Ground flat, square and parallel to 0.0002"



2200-0903

Item	Size	Thickness	Number of Hole	Price
2200-0901	4"x3"x3"	1"	13 Tapped 1/4"-20	\$109.00/PC
2200-0903	4"x4"x4"	1-1/4"	13 Tapped 1/4"-20	\$138.00/PC
2200-0904	6"x6"x4"	1-1/4"	26 Tapped 1/4"-20	\$275.00/PC

COMPOUND ANGLE PLATE

Features:

- Solid 1 piece steel construction
- Hardened to Rc 58-62
- Square and parallel within 0.0002"
- Includes 1 clamp



Item	Model	Length	Height	Wall Thickness	Tapped Hole	Weight	Price
SBK0-0105	CAP-46	6"	4"	4"	(16)1/4"-20	11lbs	\$295.00/SET

FINE POLE PERMANENT MAGNETIC CHUCK

Features:

- 1-5/8" very low profile to allow max. work height clearance
- Use rare earth ceramic magnets inside for superior holding power
- Sealed against dirt and liquids
- Flat and parallel within 0.0002"
- Precision ground rails are included
- High holding power: max 140lbs/sq.in.
- Steel pole spacing: 1/16" brass pole spacing: 1/32"



2720-1000

Item	Size	Price
2720-2000	4" x 4"	\$290.00/PC
2720-1000	6" x 6"	\$366.00/PC

FINE POLE PERMANENT MAGNETIC CHUCK

Features:

- Use rare earth ceramic magnets inside for superior holding power
- Sealed against dirt and liquid
- 1-5/8" very low profile to allow max. work height clearance
- Flat and parallel within 0.0002"
- Precision ground rails are included
- High holding power: max 140lbs/sq.in.
- Steel pole spacing: 1/16" brass pole spacing: 1/32"



2720-0000

Item	Size	Price
2720-5000	6" x 12"	\$540.00/PC
2720-0000	6" x 18"	\$829.00/PC

MAGNETIC CHUCK PARALLEL & UNIVERSAL "V" BLOCK

Features:

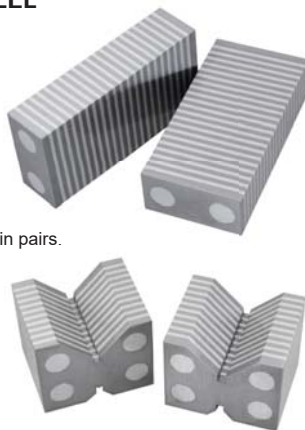
- Cast integrally with aluminum to ensure the blocks will never crack or become loose even when accidentally dropped.
- Steel used is selected for the aluminum magnetic transfer and low retention of magnetic flux.

Item # EG06-2001 \$86.00/SET

- 1" x 2" x 4" micro parallels ground all over and in pairs.

Item # EG06-2004 \$106.00/SET

- "V" blocks are universal (hold in any direction on a magnetic chuck).
- Two V's: 1-7/8" x 2-3/8" x 2".
- Large V: 2" round capacity.
- Small V: 1/2" round capacity.



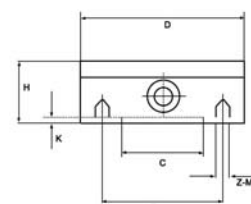
CIRCUL PERMANENT MAGNETIC CHUCK

Features:

- The round fine pitch permanent magnet chuck is suitable for grinders and lathes, best for longer and thicker workpieces.
- The round micro pitch permanent magnetic chuck is suitable for grinding applications, best for smaller and thinner workpieces.
- High holding power: max 140lbs/sq.in.
- Steel pole spacing: 1/16", brass pole spacing: 1/32".



1151-1150



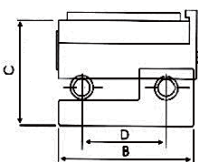
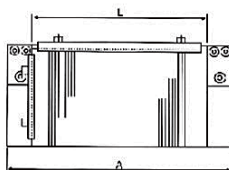
Item	D	H	K	C	E	Z-M	Weight	Price
1151-1150	6.299"	1.929"	0.079"	4.921"	5.512"	4xM8	6.5kg	\$560.00/PC
1151-2200	7.874"	2.008"	0.079"	6.299"	7.087"	4xM8	10kg	\$890.00/PC

6"X6" MAGNETIC SINE PLATE

Center Distance of Rolls 4", within 0.0002"

Features:

- Processed through a special procedure, enabling higher precision-adjustment.
- Flat type for a wide range of uses. Ideal for high accuracy grinding operations.
- Sealed against dirt and liquids.
- A removable handle and two precision ground rails are included for the magnetic chuck.
- Steel pole spacing: 1/16", brass pole spacing: 1/32".
- Center distance of rolls 4", within 0.0002".
- The ON/OFF switch magnetic surface accuracy.



Item	Size (LxB)	Rolls Center (D)	C	A	Angle	Price
2520-1000	6" x 6"	4"	3.385"	7.874"	0-60°	\$755.00/PC