

ULTRA-PRECISION V-BLOCK & CLAMP SET

Features:

- Guaranteed square parallel & central within 0.0002".
- Hardened & ground to HRC52-58.
- 90° V-block.
- One reversible swing away clamp supplied with each V-block.
- Side slots for easy clamping.
- Supplied in pairs.



3610-9011

Item	Length	Width	Height	Price
3610-9011	1-3/8"	1-3/8"	1-3/16"	\$65.00/SET
3610-9012	2-3/8"	2-3/8"	2"	\$116.00/SET
3610-9013	4-1/8"	4-1/8"	3-1/16"	\$235.00/SET

MULTI-USE V BLOCK AND CLAMP SET

Features:

- Stepped groove construction permits low or high clamping.
- Holds square or round work.
- Hardened steel.
- Sold in matched pairs.
- All sides are precision ground, parallel, and square.
- Size: 2-3/8" x 2-3/4" x 2".
- Capacity: 2" round, 1-7/16" square.



Item #0303-0219 \$120.00/SET

ALL-ANGLE V-BLOCK & CLAMP

Applications:

- For grinding, milling and drilling.

Features:

- Made of hardened and precision ground tool steel.
- All sides are parallel and the vee is central and ground.
- The central hole is provided for drilling or removing pins.
- The "V" block has (4)3/8"-16 tapped holes, (2) in the base and (1) on each side for angle iron clamping.
- Each block is provided with a black oxidized clamp.
- Parallelism tolerance of vee axis to base: within 0.0003"/8 microns.
- Dimensions: 3-5/8"L x 1-7/8"W x 1-7/8"H.
- Maximum capacity of vee: 1-5/16" diameter.



Item #3605-3050
\$99.00/SET

MAGNETIC V-BLOCK

Applications:

- Ideal for holding round and irregular for scribing, grinding, measuring and machining.

Features:

- 145lbs of power holding force.
- Fine precision ground finish for use as an inspection device.
- Have fixed On/Off switch.



EG08-1105

Item	Height	Width	Length	Price
EG08-1101	2-7/8"	2-3/8"	2-3/4"	\$70.00/PC
EG08-1105	3-3/4"	2-3/4"	4"	\$118.00/PC

MACHINIST BENCH BLOCK

Features:

- The machinist bench block is a handy tool for holding work while driving pins, drilling, etc.;
- Made from steel hardened and ground.
- Diameters of the ground holes range from 1/8" to 5/8" (3-16mm).
- The knurled side provides an excellent gripping surface; V-groove across the face accommodates round and odd-shaped stock.



Item	Diameter	Height	Price
EG02-0628	3"	1-1/2"	\$58.00/PC

MASTER PRECISION LEVEL

Features:

- Adjustable main vial 0.0002"/10".
- Base with a V-groove.
- With cross test vial.
- With insulating grip.
- Robust cast iron body.



S908-C685

Item	Size	Accuracy	Price
S908-C684	6"	0.0002"/10"	\$116.00/PC
S908-C685	8"	0.0002"/10"	\$145.00/PC
S908-C687	12"	0.0002"/10"	\$168.00/PC

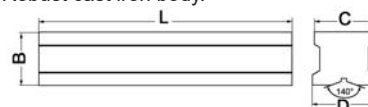
PROFESSIONAL MASTER PRECISION LEVEL

Features:

- Adjustable main vial 0.0002"/10".
- Base with a V-groove.
- With cross test vial.
- Robust cast iron body.



S908-C608



Item	Size (L)	Accuracy	B	C	D	Price
S908-C606	6"	0.0002"/10"	1.830"	1.574"	1.732"	\$138.00/PC
S908-C608	8"	0.0002"/10"	1.830"	1.574"	1.890"	\$166.00/PC
S908-C612	12"	0.0002"/10"	1.830"	1.574"	1.890"	\$199.00/PC

MASTER FRAME SPIRIT LEVEL

Features:

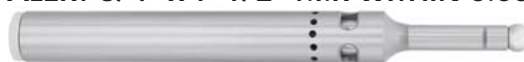
- Vial sensitivity: 0.0002"/10".
- With cross test vial.
- With insulating grip.
- 2 faces with V-grooves, 2 flat faces.
- Robust cast iron body.



S908-C693

Item	Size	Price
S908-C692	6" x 6"	\$129.00/PC
S908-C693	8" x 8"	\$189.00/PC
S908-C695	12" x 12"	\$216.00/PC

ELECTRONIC EDGE FINDER WITH SOUND ALERT 3/4" x 7-1/2" T.I.R WITHIN 0.0002"



Features:

- One-piece construction for strength and repeat-ability T.I.R within 0.005mm/0.0002".
- Precision ground on all surfaces.
- Quickly locates work edges.
- Time-saving positioning.
- Tool steel hardened to HRC 60.
- High sensitivity probe for accurate positioning.
- Four highly visible lights.
- Both ends of the probe needs to be in contact with a metal piece or a conductive material in order for the edge finder to light up.

Item #0805-3015
\$93.00/PC

- Shank Dia: 3/4".
- Probe Diameter: 0.394".
- Overall Length: 7-1/2".
- Repeatability T.I.R within 0.0002".
- Use 2pcs 1.5V button batteries and 1pc AG5 battery.

ELECTRONIC SHORT SHANK EDGE FINDER WITH SOUND ALERT



Item # C028-9273
\$69.00/PC

Features:

- One-piece construction for strength and accuracy.
- Repeatability T.I.R within 0.0002".
- Precision ground on all surfaces.
- Quickly locates work edges.
- Time-saving positioning.
- Highly visible LED lights.

SPECIFICATION

Ball diameter.....	0.394"
Shank diameter.....	3/4"
Overall length.....	3.937"