

## DRO MILLING & LATHE MACHINE PACKAGE

**Features:**

- Voltage range: AC80V-260V/50HZ-60HZ.
- Power dissipation: 20VA(SDS6-2V), 15W(D80-3V & D80-4V).
- Two mounting brackets are located at each end of the scale.
- Resolution selection: 0.0002"/0.005mm.
- Zero setting.
- Half calculating, locating workpiece center.
- Inch/mm conversion and INC/ABS conversion.
- Diameter/radius selection.
- Simple & smooth "R" function.
- Divide the perimeter of circle # (Bolt Circle Drilling).
- Hole drilling along an oblique line.
- Save 200 work piece zero points.
- Angular surface processing.
- Progressive processing of rectangular inner chamber.
- stop once the target value reaches.
- Cone measure.
- Number percolate.
- Takes 16 bits & 32 bits CPU technology.
- 200 cutlery memory.
- Power failure memory.
- DC10-F series small size encoder.



ISO9001

IP53

SDS6-2V

### D60 Digital Readout

**Features:**

- Voltage range: AC 80V-260V/50HZ-60HZ.
- Power dissipation: 20VA.
- Coordinate number: 1/2/3.
- Display: 7-bit display with signed.
- Times frequency: 4X.
- Readout box input signal: TTL, ELA-422-A.
- Input frequency: >100KHZ.
- Resolution: 10µm, 5µm, 1µm, 0.5µm, & 0.1µm.
- Operating keyboard: light-touch buttons.
- Linear scale grating space: 0.04mm, 0.02mm, 0.01mm, the power supply is +5V, the difference between two and four TTL output signal is 90°.



SINS-1002

Item	Description	Price
SDS6-2V	2 Axis Digital Scale Display	\$456.00/PC

### 2-Axis DRO for Milling Machine (X, Y)

**Includes:**

- All mounting hardware.
- 2 linear glass scales.
- 1 standard DRO counter (SDS6-2V).
- Operating manual.
- Mounting arm for DRO.

Item	Mill Size	Travel	Overall Length of Scale	Price
SINS-1001	8 x 36"	12 x 30"	17 x 35"	\$780.00/SET
SINS-1002	9 x 42"	14 x 30"	19 x 35"	\$780.00/SET
SINS-1003	9 x 49"	14 x 36"	19 x 40"	\$780.00/SET
SINS-1004	10 x 54"	16 x 40"	21 x 45"	\$820.00/SET



SIN3-2004

### 2-Axis DRO for Lathe Machine (X, Y)

**Includes:**

- All mounting hardware.
- 2 linear glass scales (the cross slide scale is the slim style).
- 1 standard DRO counter (SDS6-2V).
- Operating manual.
- Mounting arm for DRO.

Item	Lathe Size	Travel	Overall Length of Scale	Price
SIN3-2001	12 x 24"	6 x 30"	11 x 35"	\$820.00/SET
SIN3-2002	12 x 36"/13 x 40"	8 x 40"	13 x 45"	\$868.00/SET
SIN3-2003	The same as SIN3-2002			\$868.00/SET
SIN3-2004	14 x 40"/16 x 40"	10 x 40"	15 x 45"	\$888.00/SET
SIN3-2005	The same as SIN3-2004			\$888.00/SET

## STANDARD GLASS SCALE (BED LENGTH LSE)

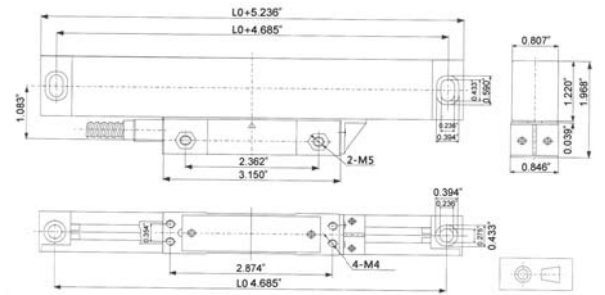


SIN3-0107

**Features:**

- Resolution 0.0002"/0.005mm.
- Max. response speeds: 47 in./sec.
- Aluminum outside case with double rubber seals.
- Over 10" connecting cable.

Item	Travel	Ovl.L	Price
SIN3-0101	12.5"	17"	\$240.00/PC
SIN3-0102	14.5"	19"	\$242.00/PC
SIN3-0106	16"	21"	\$272.00/PC
SIN3-0107	24.4"	29"	\$272.00/PC
SIN3-0109	30"	35"	\$288.00/PC
SIN3-0111	36"	40"	\$309.00/PC
SIN3-0113	40"	45"	\$369.00/PC



## SLIM GLASS SCALE (FOR LATHE CROSS FEED)



SIN3-0204

Item	Travel	Ovl.L	Price
SIN3-0201	4.5"	9"	\$209.00/PC
SIN3-0202	6.5"	11"	\$209.00/PC
SIN3-0203	8.5"	13"	\$209.00/PC
SIN3-0204	10.5"	15"	\$209.00/PC

