

### VISI-DRESS RADIUS DRESSER

- Features:
- Center height: 2.56"
  - Max. size grinding wheel: 8" diameter
  - Max. convex radius: 1/2"
  - Max. concave radius: 1"
  - Tangential travel: 0.89"
  - Angle/linear dressing range: 95° ~ 0-95°



Item #HE30-0003 \$690.00/PC

### SINE DRESSER

- Features:
- Cross feed up to 50mm
  - Center distance is 50mm within 0.01mm accuracy
  - Dresses grinding wheel to any angle from 0 to 60 degree



Item # 2310-7000 \$355.00/PC

### RADIUS AND ANGLE DRESSER

- Features:
- Maximum diameter of grinding wheel 12"
  - Convex radii 0-1-5/8"
  - Concave radii 5/8" - 1-5/8"
  - Tangent travel, either side of center 2"
  - Center line of tool 3.4"
  - Overall length 15.236"
  - Weight 30lbs.



Item # HE30-0005 \$598.00/PC

### PROFILE WHEEL DRESSER

- Features:
- Convex radii: 0 to 1.500"
  - Concave radii: 0.03" to 1.500"
  - Dressing capacity up to 8" wheel dia
  - Height to center of diamond: 6-1/2"
  - Overall height: 7"
  - Diamond is not included



Item # EG11-0400 \$690.00/PC

### 5C SPIN INDEX

- Features:
- Hardened and precision-ground spindle
  - 0.0004" TIR spindle accuracy
  - Precision-ground 36-position index plate
  - Direct indexing in ten steps, graduated in 5-degree increments
  - For use on all milling machines, surface grinders, and inspection equipment
  - Approximate weight 18lbs.



Item # 0225-0204 \$93.00/PC

### MATHING TAILSTOCK FOR THE 5C SPIN INDEX



Item # 0240-0104 \$95.00/PC

### 5C HORIZONTAL/VERTICAL COLLET HOLDER

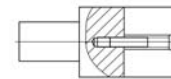
- Features:
- Height of centre (horizontal): 2.52"
  - Height (horizontal): 3.74"
  - Height (vertical): 4.13"
  - Size of base (horizontal): 5" x 3.96"
  - Size of base (vertical): 5" x 3.74"
  - Universally adaptable to drill presses, milling machines, surface grinders, etc.
  - Collet does not move up or down
  - Retains positive relation to base
  - Can be adjusted or changed without disturbing set-up
  - Cam lever opens and closes easily so collets can be changed quickly
  - Utilizes a cam lock and positive release



Item # 0225-0202 \$100.00/PC

### HAND-E EXPANDING ARBORS SET

- Operation:
- Chuck arbor in machine to be used.
  - Tighten expanding screw so that arbor expands 0.005".
  - Machine arbor to length and size required.
  - Loosen expanding screw.
  - Position part on arbor and tighten expanding screw.
  - Size: 1/4", 3/8", 1/2", 5/8", 3/4", 7/8", 1", and 1-1/4" arbors with 4 alloy wrenches in a handy wooden stand.



Item # 6931-0900 \$86.00/SET

### 5C HORIZONTAL/VERTICAL COLLET INDEX

- Features:
- Utilize 5C collet
  - Patented single lever action activates the indexing mechanism
  - Precision ground index plate has 24 indexing locations in fifteen degree in crement, any of which can be masked for greater versatility
  - Spindle accuracy 0.0004"
  - Approximate weight: 35lbs.
  - Spindle is 2-1/4-8 TPI
- Specifications:
- Dividing spindle concentricity: 0.0004"
  - Cylindrical center bore (per 1") concentricity: 0.0008"
  - Lateral offset of center slot of divide spindle: 0.0008"
  - Center slot to dividing spindle concentricity: 0.0008"
  - Base to face squareness: 0.0008"



Item # 0225-0205 \$338.00/PC

### 58 PCS DELUXE STEEL CLAMPING KIT, TABLE SLOT 5/8", STUD SIZE 1/2"-13

- Features:
- Table slot: 5/8"
  - Stud size: 1/2"-13
  - Block width: 1"
  - Quality kit for a bridgeport

- Included:
- 24 studs; 4 pieces 3", 4", 5", 6", 7", & 8" Long
  - 4 coupling nuts
  - 6 flange nuts
  - 6 T-slot nuts
  - 6 serrated end clamps
  - 12 step blocks
  - Wall Holder



Item #4230-2626 \$96.00/SET

### POWER FEED

- Features:
- Fits many popular vertical mills
  - Automatic shut-off at end of cut
  - Feed range: 0-25"/minute.
  - 40" / minute rapid traverse speed
  - Easy installation
  - 110V with manual reset switch



HJ20-0200

Item	Model	Description	Price
HJ20-0200	X-Axis	Feed 135Lbs	\$599.00/SET
HJ20-0300	X-Axis	Feed 150Lbs	\$655.00/SET
HJ20-0320	Y-Axis	Feed 150Lbs	\$655.00/SET
HJ20-0325	Z-Axis	Feed 150Lbs	\$655.00/SET
HJ20-0000		Plastic gear for power feed	\$60.00/PC

### 1/2"-13 T-SLOT NUT

- Features:
- Heat thread steel black oxide finished.
  - An imperfect thread is left the base of the T-nut to eliminate any danger of screwing stud through
  - T-nut and damaging table slot.



0532-4818

Item	T-Slots Nut	Table Slot T	Slot Height	Overall Height	Price
0532-4818	1/2"-13	5/8"	11/32"	5/8"	\$3.00/PC
0532-4819	1/2"-13	11/16"	7/16"	3/4"	\$3.00/PC