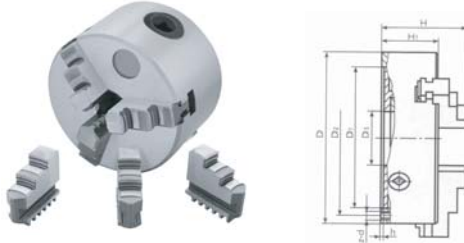


3-JAW SELF-CENTRING CHUCK (PLAIN BACK)

- Features:
- 0.003" TIR.
 - Semi-steel body.
 - Including a set of inside jaws and a set of outside jaws.
 - All jaws are hardened



0559-0110

Item	Diameter	Center Hole	D1	D2	D3	H	H1	h	z-d	Price
0559-0110	3"/80mm	0.630"	2.165"	2.598"	0.630"	2.598"	1.969"	0.138"	3-M6	\$118.00/PC
0559-0111	4"/100mm	0.866"	2.835"	3.307"	0.866"	2.933"	2.165"	0.138"	3-M8	\$135.00/PC
0559-0112	5"/125mm	1.181"	3.740"	4.252"	1.181"	3.346"	2.283"	0.157"	3-M8	\$155.00/PC

TWO-PIECE REVERSIBLE JAWS 3-JAW SELF-CENTRING CHUCK(PLAIN BACK)

- Features:
- 0.003" TIR
 - Semi-steel body
 - 2-piece reversible jaws
 - All jaws are hardened



0559-0114

Item	Diameter	Center Hole	D1	D2	D3	H	H1	h	z-d	Price
0559-0114	6"/160mm	1.575"	5.118"	5.591"	1.575"	4.291"	2.559"	0.197"	3-M8	\$232.00/PC
0559-0115	8"/200mm	2.559"	6.496"	7.087"	2.559"	4.803"	2.953"	0.197"	3-M10	\$269.00/PC
0559-0116	10"/250mm	3.150"	8.110"	8.898"	3.150"	5.236"	3.150"	0.197"	3-M12	\$340.00/PC
0559-0117	12"/315mm	3.937"	10.236"	11.220"	3.937"	6.122"	3.543"	0.236"	3-M16	\$768.00/PC

TWO-PIECE REVERSIBLE JAWS 3-JAW SELF-CENTRING CHUCK DIRECT MOUNT

- "D1" Series (Direct Mounting) Chuck.
- Features:
- Hardened and ground two-piece reversible jaws
 - Semi-steel body
 - Complete with chuck key
 - Standard accuracy
 - Standard scroll

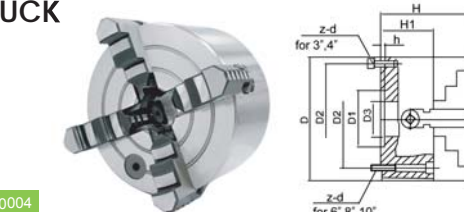


0559-0101

Item	Diameter	Mount	Center Hole	D1	D2	D3	H	H1	h	z-d	Price
0559-0101	6"/160mm	D1-4	1.575"	2.501"	3.252"	1.575"	4.528"	2.874"	0.512"	3-M10	\$269.00/PC
0559-0102	8"/200mm	D1-4	2.362"	2.501"	3.252"	2.362"	4.921"	3.465"	0.512"	3-M10	\$385.00/PC
0559-0104	8"/200mm	D1-6	2.362"	4.188"	5.252"	2.362"	5.276"	3.465"	0.630"	6-M16	\$385.00/PC
0559-0106	10"/250mm	D1-6	2.756"	4.188"	5.252"	2.756"	5.866"	3.740"	0.630"	6-M16	\$469.00/PC
0559-0108	12"/320mm	D1-6	3.937"	4.188"	5.252"	3.937"	6.969"	4.409"	0.630"	6-M20	\$768.00/PC

4-JAW INDEPENDENT CHUCK

- Features:
- Plain back, semi-steel body.
 - This chuck has one set of reversible jaws.
 - Jaws are hardened and ground.
 - Independent jaw movement, suitable for machining all kinds of special-shaped work pieces.
 - 1 set of setting screws.
 - 1 hexagon wrench.



0557-0004

Item	Chuck Size	Center Hole	D1	D2	D3	H	H1	h	z-d	Price
0557-0003	3"/80mm	0.866"	2.165"	2.598"	0.866"	2.323"	1.654"	0.138"	4-M6	\$136.00/PC
0557-0004	4"/100mm	0.984"	2.835"	3.307"	0.984"	3.031"	2.126"	0.138"	4-M8	\$146.00/PC
0557-0006	6"/160mm	1.772"	2.559"	3.740"	1.772"	3.661"	2.559"	0.197"	4-M10	\$229.00/PC
0557-0008	8"/200mm	2.165"	2.953"	3.740"	2.165"	4.213"	2.953"	0.236"	4-M10	\$258.00/PC
0557-0010	10"/250mm	2.953"	4.331"	5.118"	2.953"	4.724"	3.150"	0.236"	4-M12	\$358.00/PC

FULLY MACHINED LATHE CHUCK BACK PLATE D1 TYPE ADAPTOR FOR MOST 4 JAW INDEPENDENT CHUCK

- Features:
- Need machining the back plate shoulder based on different 4 jaw independent chuck
 - The back plate outside diameter is smaller than the lathe chuck diameter due to the mounting holes are towards the center of the lathe chuck; then the recess diameter of the lathe chuck still provides a tight fit.

Item	Spindle Taper	Chuck	Diameter	Price
2600-0162	D1-3	6"	D= 6.29"	\$112.00/PC
2600-0163	D1-4	6"	D= 6.29"	\$112.00/PC
2600-0164	D1-5	6"	D= 6.29"	\$120.00/PC
2600-0165	D1-3	8"	D= 6.29"	\$132.00/PC
2600-0166	D1-4	8"	D= 6.29"	\$132.00/PC
2600-0167	D1-6	8"	D= 6.29"	\$132.00/PC
2600-0168	D1-6	10"	D= 7.87"	\$152.00/PC
2600-0169	D1-8	10"	D= 9.05"	\$152.00/PC



2600-0166

D1 TYPE ADAPTOR

- Features:
- D1 type adaptor for most 3 Jaw self-centering chucks.
 - Direct mounting on camlock spindle nose.



2600-0512

Item	Spindle Taper	Chuck Diameter	Price
2600-0517	D1-3	5"	\$79.00/PC
2600-0518	D1-3	6"	\$103.00/PC
2600-0510	D1-4	5"	\$83.00/PC
2600-0511	D1-4	6"	\$108.00/PC
2600-0512	D1-4	8"	\$139.00/PC
2600-0513	D1-6	8"	\$139.00/PC
2600-0515	D1-5	8"	\$139.00/PC

L-00 TYPE ADAPTOR FOR 3-JAW LATHE CHUCK

- Features:
- For 3 Jaw plain back chucks
 - Direct mounting on "L" type spindle nose



2700-0500

Item	Chuck Dia.	Spindle Taper	Price
2700-0500	6"	L-00	\$169.00/PC
2700-0501	8"	L-00	\$195.00/PC
2700-0502	10"	L-00	\$258.00/PC

3-JAW SELF CENTERING SCROLL CHUCK WITH 5C SHANK



- Features:
- Eliminates tearing down a collet set-up on a lathe
 - Works with any 5C tooling
 - Self-centering 0.003" T.I.R
 - Includes a set of inside jaws and a set of outside jaws.

0225-0234

Item	Diameter	Price
0225-0233	3"(75mm)	\$216.00/PC
0225-0234	4"(100mm)	\$258.00/PC

3-JAW SELF CENTERING SCROLL CHUCK WITH R8 SHANK



- Features:
- Eliminates tearing down a collet set-up on a lathe
 - Works with any R8 tooling
 - Self-centering 0.003" T.I.R
 - Includes a set of inside jaws and a set of outside jaws.

0225-0237

Item	Diameter	Price
0225-0236	3"(75mm)	\$216.00/PC
0225-0237	4"(100mm)	\$258.00/PC