

5C COLLET CHUCK (PLAIN BACK)

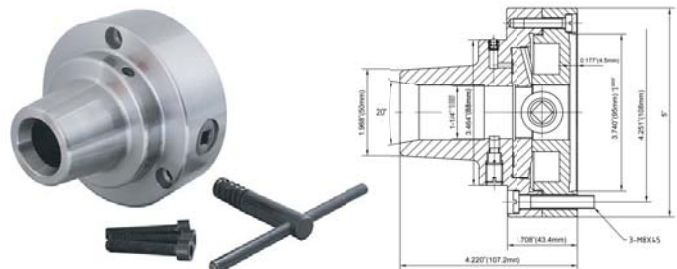
Features:

- Outside diameter: 5"
- Can be used on lathe and grinding machines
- Plain back, have to choose proper back plate to connect with your machine
- Should be used with back plate (adapter) to connect with your specific lathe spindle
- Can use any size 5C collet
Round collet: 1/16" ~ 1-1/8";
Hex collet: 1/8" ~ 7/8";
Square Collet: 1/8" ~ 3/4"

- Scroll and pinion design just like 3-jaw chuck, operated with chuck key.
- Scroll & pinion precision machined and hardened
- Max. RPM 6000
- TIR: 0.0006"

Item #0269-0010

\$340⁰⁰_{PC}



5C COLLET CHUCK WITH INTEGRAL D1-3 CAM LOCK MOUNTING

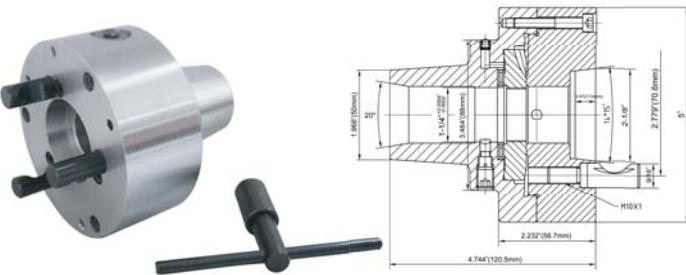
Features:

- Outside diameter: 5"
- Spindle: D1-3 cam lock
- No. of stud: 3
- Diameter of stud: 9/16"
- Integrated with D1-3 back mounting. Installed on the machine in seconds, no machining required
- Can be used on any lathes with D1-3 cam lock mounting
- Customers don't need to do any work when received. Just mount it on your machine spindle and go.
- Can use any size 5C collets
Round collets: 1/16" ~ 1-1/8";
Hex collets: 1/8" ~ 7/8";
Square collet: 1/8" ~ 3/4"

- Scroll and pinion design just like 3-jaw chuck, operated with chuck key.
- Scroll & pinion precision machined and hardened
- Max. RPM 6000
- TIR: 0.0006"

Item #0269-0013

\$369⁰⁰_{PC}



5C COLLET CHUCK WITH INTEGRAL D1-4 CAM LOCK MOUNTING

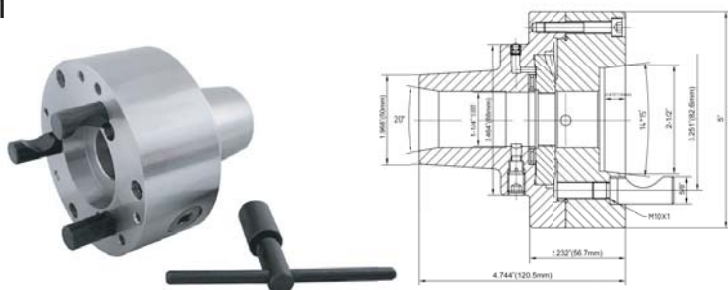
Features:

- Outside diameter: 5"
- Spindle: D1-4 cam lock
- No. of stud: 3
- Diameter of stud: 5/8"
- Integrated with D1-4 back mounting. Installed on the machine in seconds, no machining required
- Can be used on any lathe with D1-4 cam lock mounting
- Customers don't need to do any work when received, just mount it on your machine spindle and go.
- Can use any size 5C collets
Round collets: 1/16" ~ 1-1/8";
Hex collets: 1/8" ~ 7/8";
Square Collets: 1/8" ~ 3/4"

- Scroll and pinion design just like 3-jaw chuck, operated with chuck key.
- Scroll & pinion precision machined and hardened
- Max. RPM 6000
- TIR: 0.0006"

Item #0269-0014

\$369⁰⁰_{PC}



5C COLLET CHUCK WITH INTEGRAL D1-5 CAM LOCK MOUNTING

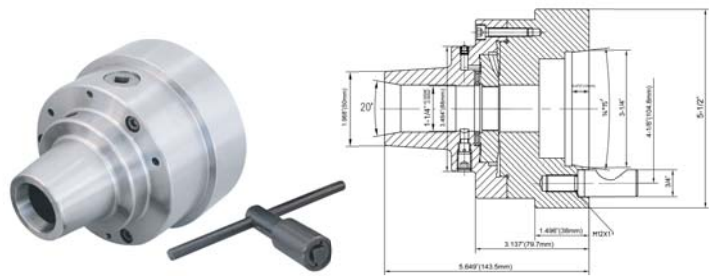
Features:

- Outside diameter: 5-1/2"
- Spindle: D1-5 cam lock
- No. of stud: 6
- Diameter of stud: 3/4"
- Integrated with D1-5 back mounting. Installed on the machine in seconds, no machining required
- Can be used on any lathe with D1-5 cam lock mounting
- Customers don't need to do any work when received, just mount it on your machine spindle and go.
- Can use any size 5C collet
Round collet: 1/16" ~ 1-1/8";
Hex collet: 1/8" ~ 7/8";
Square Collet: 1/8" ~ 3/4"

- Scroll and pinion design just like 3-jaw chuck, operated with chuck key.
- Scroll & pinion precision machined and hardened
- Max. RPM 6000
- TIR: 0.0006"

Item #0269-0015

\$412⁰⁰_{PC}



5C COLLET CHUCK WITH INTEGRAL D1-6 CAM LOCK MOUNTING

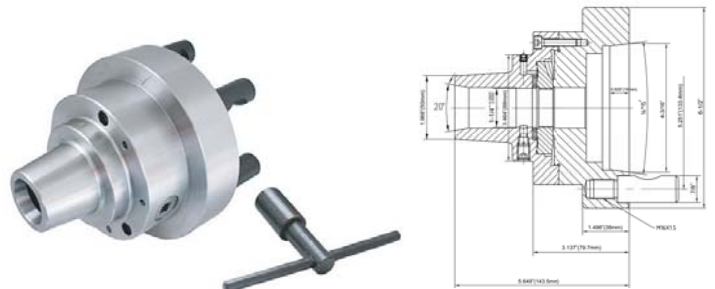
Features:

- Outside diameter: 6-1/2"
- Spindle: D1-6 cam lock
- No. of stud: 6
- Diameter of stud: 7/8"
- Integrated with D1-6 back mounting. Installed on the machine in seconds, no machining required
- Can be used on any lathe with D1-6 cam lock mounting
- Customers don't need to do any work when received, just mount it on your machine spindle and go.
- Can use any size 5C collet
Round collet: 1/16" ~ 1-1/8";
Hex collet: 1/8" ~ 7/8";
Square Collet: 1/8" ~ 3/4"

- Scroll and pinion design just like 3-jaw chuck, operated with chuck key.
- Scroll & pinion precision machined and hardened
- Max. RPM 6000
- TIR: 0.0006"

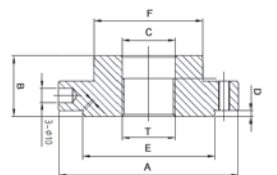
Item #0269-0016

\$466⁰⁰_{PC}



5" SEMI FINISHED THREADED BACK PLATE FOR PLAIN BACK 5C COLLET CHUCK

Item	Size	Size of Screw Thread (T)	A	B	C	D	E	F	Price
2600-5453	5"	1-1/2"-8	4.961"	1.693"	1.514"	0.157"	3.74"	3.091"	\$88.00/PC
2600-5455	5"	2-1/4"-8	4.961"	1.949"	2.260"	0.157"	3.74"	3.346"	\$98.00/PC



2600-5455