

### TURNING AND FACING HOLDER #1

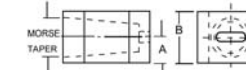
- Features:
- Takes various sizes of bits, turning and facing tools can be locked together.
  - Saves time and labor when changing operations.

Item	Model	A	B	C	D	Price
0250-0101	AXA	15/16"	1/2"	7/16"	1-1/2"	\$24.00/PC
0250-0101T	AXA	15/16"	5/8"	7/16"	1-1/2"	\$24.00/PC
0250-0201	BXA	1-1/8"	5/8"	1/2"	1-3/4"	\$27.00/PC
0250-0201T	BXA	1-1/8"	3/4"	1/2"	1-3/4"	\$27.00/PC
0250-0301	CXA	1-7/16"	3/4"	5/8"	2-1/8"	\$36.00/PC
0250-0401	CA	1-11/16"	1"	3/4"	2-1/2"	\$52.00/PC



### MORSE TAPER HOLDER #5

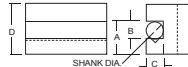
- Features:
- Drills with carriage by using power feed instead of tailstock. Easily centered.
  - For Nos. 2, 3 and 4, morse taper drill(not included).



Item	Model	A	B	Hole Size	Price
0250-0105	AXA	3/4"	1-1/2"	2 MT	\$36.00/PC
0250-0205	BXA	7/8"	1-3/4"	2 MT	\$43.00/PC
0250-0305	CXA	1"	2"	3 MT	\$52.00/PC
0250-0405	CA	1-1/4"	2-1/2"	3 MT	\$63.00/PC
0250-0453	CA	1-3/16"	2-3/8"	4 MT	\$75.00/PC

### BORING, TURNING AND FACING HOLDER #2

- Features:
- V-groove holds round shank boring bars and tools as well as square tool bits.

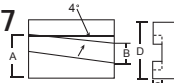


Item	Model	A	B	C	D	Shank	Price
0250-0102	AXA	15/16"	1/2"	7/16"	1-1/2"	7/16"	\$24.00/PC
0250-0202	BXA	1-1/8"	5/8"	1/2"	1-3/4"	1/2"	\$27.00/PC
0250-0302	CXA	1-7/16"	3/4"	5/8"	2-1/8"	3/4"	\$36.00/PC
0250-0402	CA	1-11/16"	1"	3/4"	2-1/2"	13/16"	\$52.00/PC



### UNIVERSAL PARTING BLADE HOLDER #7

- Features:
- For bevel as well as T-cut blade.

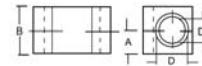


Item	Model	A	B	C	D	Blade Height	Price
0250-0107	AXA	13/16"	1/2"	3/16"	1-1/2"	1/2"	\$33.00/PC
0250-0207	BXA	1"	11/16"	3/16"	1-3/4"	11/16"	\$36.00/PC
0250-0307	CXA	1-3/16"	3/4"	3/16"	2"	3/4"	\$56.00/PC
0250-0407	CA	1-7/16"	7/8"	1/4"	2-1/2"	7/8"	\$69.00/PC



### HEAVY DUTY BORING BAR HOLDER #4 & #41

- Features:
- Equipped with a split bushing to accommodate a boring bar of a smaller diameter.
  - It grips with extreme rigidity, cuts smoothly without chatter.



Item	Model	A	B	D	D1	Price
0250-0104	AXA	3/4"	1-1/2"	3/4"	5/8"	\$36.00/PC
0250-0204	BXA	7/8"	1-3/4"	1"	3/4"	\$43.00/PC
0250-0304	CXA	1"	2"	1"	3/4"	\$56.00/PC
0250-0404	CA	1-1/4"	2-1/2"	1-1/4"	1"	\$69.00/PC
0250-0141	AXA	7/8"	1-3/4"	1"	3/4"	\$40.00/PC
0250-0241	BXA	1"	2"	1-1/4"	1"	\$52.00/PC
0250-0341	CXA	1-1/8"	2-1/4"	1-1/4"	1"	\$63.00/PC
0250-0441	CA	1-3/8"	2-3/4"	1-1/2"	1-1/4"	\$75.00/PC

### KNURLING, TURNING AND FACING HOLDER #10

- Features:
- For turning and facing as well as knurling. Supplied with a set of high-speed, precision-ground, and lapped medium diamond knurls.
  - Dimensions: 3/4"x3/8"x1/4"

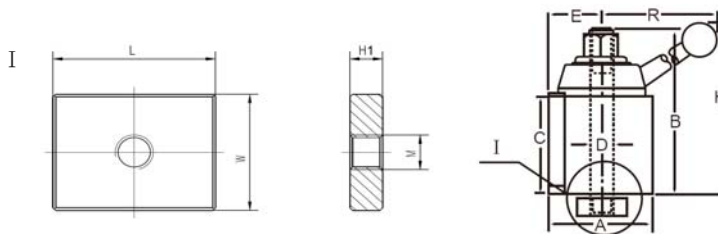


Item	Model	A	B	C	E	Toolbit	Price
0250-0110	AXA	7/8"	2-1/2"	1-9/16"	1/2"	3/16"-1/2"	\$40.00/PC
0250-0210	BXA	1"	2-5/8"	1-3/4"	5/8"	1/4"-5/8"	\$48.00/PC
0250-0310	CXA	1-3/16"	3-1/8"	2"	3/4"	1/2"-3/4"	\$69.00/PC
0250-0410	CA	1-7/16"	3-3/4"	2-1/2"	1"	1/2"-1"	\$80.00/PC



### QUICK CHANGE TOOL POST

- Both are precision engineered to assure repetitive accuracy.
- Advanced design provides built-in quick tool changing versatility with positive rigidity to meet the most exacting tolerances.
- Quickly and easily installed on an engine, bench, or turret lathe for a wide range of operations, from fine precise work for heavy duty cutting.
- Piston type posts are economical, while the wedge type posts are clearly ultra-precise. Both accept the toolholders and interchange with Aloris, Dorian, and DTM tooling.



Wedge Style 0250-0111



Piston Style 0250-0300

#### Two different styles-piston or wedge

##### Piston Style

Item	Model	A	B	C	D	E	H	R	Swing	Code	L	W	H1	M	Price
0250-0100	AXA	2-1/2"	3-7/8"	2-1/4"	9/16"	1-7/16"	4-11/16"	5-3/4"	6-12"	I	1.850"	2.362"	0.472"	M14x1.5	\$125.00/PC
0250-0200	BXA	3"	4-5/8"	2-3/4"	5/8"	1-5/8"	5-9/16"	7-5/16"	10-15"	I	2.756"	2.500"	0.630"	M16x1.5	\$136.00/PC
0250-0300	CXA	3-3/8"	5-1/8"	3"	3/4"	1-7/8"	6-1/8"	7-7/8"	13-18"	I	2.992"	2.992"	0.748"	M20x2	\$169.00/PC
0250-0400	CA	4"	6-1/4"	3-5/8"	7/8"	2-1/8"	7"	9"	14-20"	I	3.937"	2.992"	0.984"	M22x2	\$318.00/PC

##### Wedge Style

Item	Model	A	B	C	D	E	H	R	Swing	Code	L	W	H1	M	Price
0250-0111	AXA	2-1/2"	3-7/8"	2-1/4"	9/16"	1-3/8"	4-11/16"	5-3/4"	6-12"	I	2.500"	2.244"	0.500"	9/16"-18UNF	\$166.00/PC
0250-0222	BXA	3"	4-5/8"	2-3/4"	5/8"	1-9/16"	5-9/16"	7-5/16"	10-15"	I	2.992"	2.756"	0.630"	5/8"-18UNF	\$199.00/PC
0250-0333	CXA	3-1/2"	5-1/8"	3"	3/4"	1-29/32"	6-1/8"	7-7/8"	13-18"	I	3.504"	2.992"	0.748"	3/4"-16UNF	\$280.00/PC
0250-0444	CA	4"	6-1/4"	3-5/8"	7/8"	2-1/8"	7"	9"	14-20"	I	3.937"	3.622"	0.984"	7/8"-14UNF	\$378.00/PC